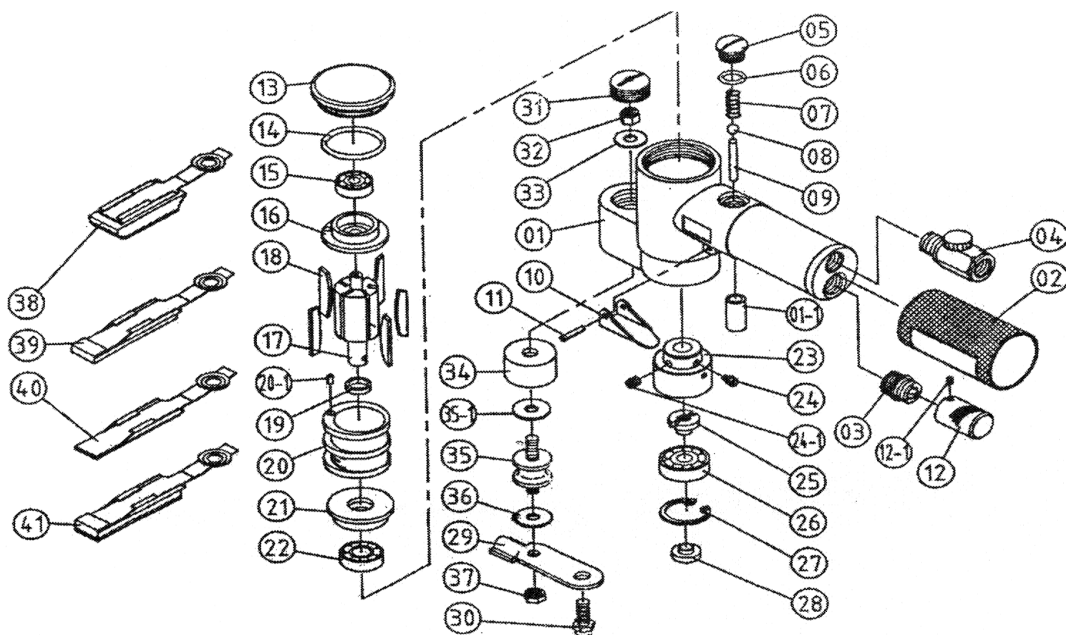


# T-7265 FINGER SANDER



**OILING INSTRUCTIONS:**  
**OIL AFTER EACH USE**  
**WITH A FEW DROPS OF**  
**AIRTOOL OIL THROUGH**  
**THE AIR INLET. RUN FOR**  
**1 SECOND TO COAT ALL**  
**INTERNAL PARTS.**



**USE 90 PSI MAXIMUM**

| REF # | PART #   | DESCRIPTION             | QTY  | REF # | PART #   | DESCRIPTION             | QTY |
|-------|----------|-------------------------|------|-------|----------|-------------------------|-----|
| 1     | 726501   | BODY                    | 1    | 21    | 726521   | FRONT END PLATE         | 1   |
| 1-1   | 726501-1 | BUSHING                 | 1    | 22    | 726522   | BEARING                 | 1   |
| 2     | 726502   | RUBBER SLEEVE/GRIP      | 1    | 23    | 726523   | OSCILLATOR              | 1   |
| 3     | 726503   | MUFFLER                 | 1    | 24    | 726524   | SET SCREW A             | 1   |
| 4     | 726504   | REGULATOR               | 1    | 24-1  | 726524-1 | SET SCREW B             | 1   |
| 5     | 726505   | PLUG                    | 1    | 25    | 726525   | LOCKING CAP             | 1   |
| 6     | 726506   | O-RING                  | 1    | 26    | 726526   | BEARING                 | 1   |
| 7     | 726507   | SPRING                  | 1    | 27    | 726527   | C-RING                  | 1   |
| 8     | 726508   | BALL                    | 1    | 28    | 726528   | NUT                     | 1   |
| 9     | 726509   | PIN                     | 1    | 29    | 726529   | BASE PLATE              | 1   |
| 10    | 726510   | LEVER                   | 1    | 30    | 726530   | SCREW                   | 1   |
| 11    | 726511   | SPRING PIN              | 1    | 31    | 726531   | PLUG                    | 1   |
| 12    | 726512   | EXHAUST COVER           | 1    | 32    | 726532   | NUT                     | 1   |
| 12-1  | 726512-1 | SET SCREW               | 1    | 33    | 726533   | WASHER                  | 1   |
| 13    | 726513   | CAP                     | 1    | 34    | 726534   | SUPPORT GUARD           | 1   |
| 14    | 726514   | O-RING                  | 1    | 35    | 726535   | RUBBER SUPPORT ASSEMBLY | 1   |
| 15    | 726515   | BEARING                 | 1    | 35-1  | 726535-1 | WASHER                  | 1   |
| 16    | 726516   | REAR END PLATE          | 1    | 36    | 726536   | WASHER                  | 1   |
| 17    | 726517   | ROTOR                   | 1    | 37    | 726537   | NUT                     | 1   |
| 18    | 726518   | ROTOR BLADES (SET OF 5) | 1set | 38    | 726538   | PAD (THICK, VELCRO)     | 1   |
| 19    | 726519   | STOP RING               | 1    | 39    | 726539   | PAD (THIN, RUBBER ONLY) | 1   |
| 20    | 726520   | CYLINDER                | 1    | 40    | 726540   | PAD (THIN, METAL ONLY)  | 1   |
| 20-1  | 726520-1 | SPRING PIN              | 1    | 41    | 726541   | PAD (THIN, VELCRO)      | 1   |

505 N. Railroad Ave. 33435  
 P.O. Box 1117 33425  
 Boynton Beach, FL

SEE MORE OF OUR CATALOG AT  
[www.taylorpneumatic.com](http://www.taylorpneumatic.com)

OCTOBER 2020 / ALL RIGHTS RESERVED / COPYRIGHT 2020

Ph. (561)732-1111  
 Fax. (561)731-4412  
 Toll Free (800) 805-8665